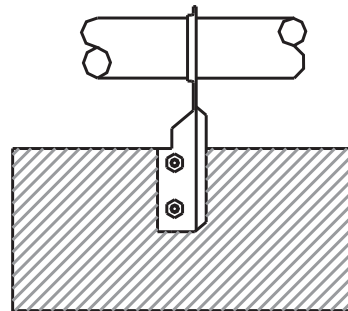
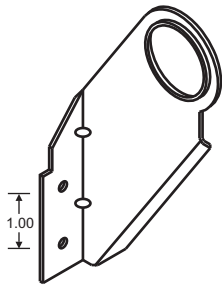




P.O. Box 3365 South El Monte, CA 91733 626.444.0541 Fax 626.444.3887 www.Afcon.org

515

## DOUBLE OFFSET CPVC HANGER




**SIZE** - 3/4" and 1" pipe.

**MATERIAL** - Carbon Steel.

**FINISH** - Mil. Galvanized.

**LISTING/APPROVAL** -

 **203 - EX 4231**

**PATENT** - No. 6,702,236

**FUNCTION** - Hanger/restrainer for horizontal CPVC pipe.

**INSTALLATION** - Per NPFA 13, 13R and 13D.

**SPECIAL NOTE:** When installing on CPVC sprinkler system pipe:

Verify that all assembly components are cleaned of any surface oil.

**FASTENERS** - UL Listed per NFPA 13.

**WOOD:** 3/4" and 1" #904 screw - no pre-drill.

### FEATURES

\* Double 1 1/2" offset - loose fit allows pipe to slide.

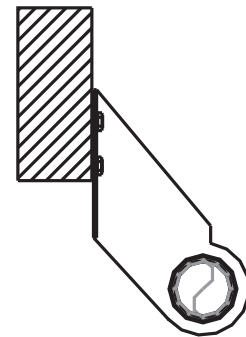
\* Center line matches AFCON #514.

\* 3/4" and 1" pipe size have common center-line.

\* Offset edge eliminates abrasion.

\* Required AFCON #904 screw has 3/8" hex head - included.

**ORDERING** - Part # and pipe size.



Specific AFCON products are exclusively designed to be compatible ONLY with other AFCON products including parts and fasteners, resulting in a listed sway brace, restrainer or hanger assembly. Be advised the following warranty restriction will apply. **DISCLAIMER** - AFCON will NOT warrant against the failure of its products when used in combination with other products, parts or systems not manufactured or sold by AFCON. AFCON shall NOT be liable under any circumstances whatsoever for any direct or indirect, incidental or consequential damages of any kind, including but not limited to loss of business or profit, when non-AFCON products have been, or are used.