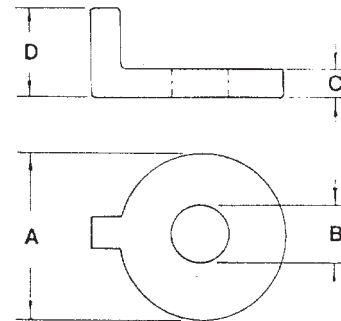
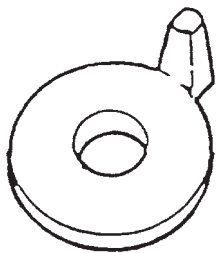




P.O. Box 3365 South El Monte, CA 91733 626.444.0541 Fax 626.444.3887 www.Afcon.org

851

SOCKET WASHER



ROD SIZE	A	B	C	D	WEIGHT/C (APPROX)
3/4	2 13/16	7/8	5/8	1 5/8	95
1	3 13/16	1 5/16	11 1/6	3 1/4	253
1 1/4	3 13/16	1 3/8	11/16	3 1/4	248
1 3/8	3 1/2	1 1/2	3/4	3 1/4	245
1 1/2	3 1/2	1 5/8	3/4	3 1/4	240
1 3/4	4	1 7/8	1	2 1/2	390

SIZE - 3/4 thru 1 3/4 inch rod.
MATERIAL - Cast Iron or Carbon Steel.
FINISH - Plain, E.G. and H.D.G.
FUNCTION - To be used with part #850 when tie rods are required. The lug bears against the clamp bolt to prevent the washer and tie rod from slipping off the clamp.
ORDERING - Part #, rod size and finish.

