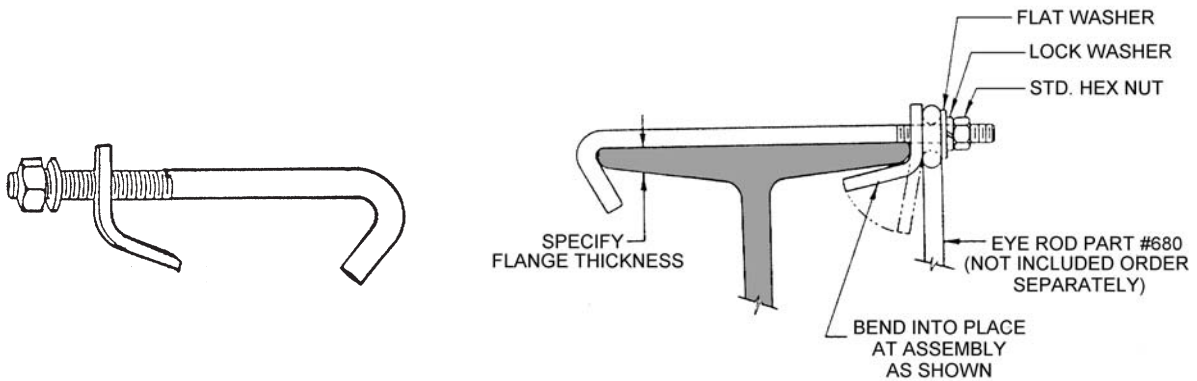




P.O. Box 3365 South El Monte, CA 91733 626.444.0541 Fax 626.444.3887 www.Afcon.org

140

TOP BEAM CLAMP



*** Use part # 142**
UL Listed per NFPA 13
 See Cut Sheet

PIPE SIZE	HOOK ROD DIAMETER	B	MAX REC. LOAD LBS. *
3/4 - 2	3/8	2 1/8	610
2 1/2 - 3 1/2	1/2	2 1/4	940
4 - 5	1/2	2 1/2	940
6	1/2	2 5/8	940

* With minimum safety Factor of 5

SIZE - 3/4" thru 6" pipe.

MATERIAL - Carbon steel.

FINISH - Plain, E.G., H.D.G. and S.S.

FUNCTION - For use on top flange of roof trusses, I-beams and wide flange beams with maximum flange thickness of 0.81 inch.

INSTALLATION - Slide steel clip against beam flange and attach hook rod and I-rod. Tighten hook rod using hex nut and lock washer provided. Hammer clip firmly against the underside of the beam. Determine hook rod length by adding figure in column headed "B" to flange width.

ORDERING - Part #, thickness of flange, length of hook rod and finish.

