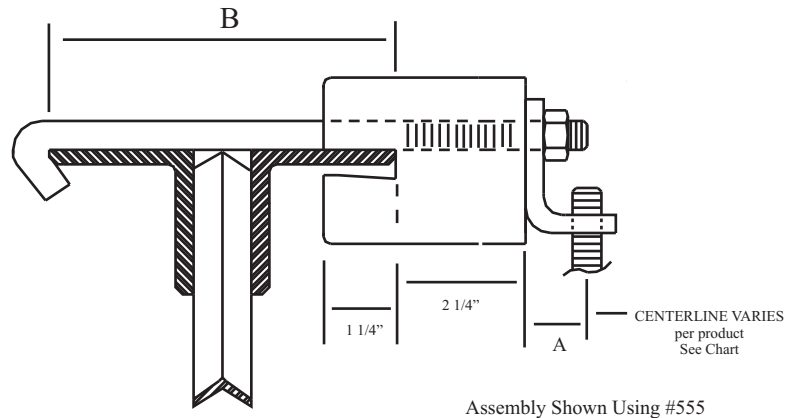
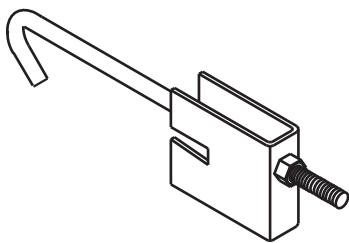




P.O. Box 3365 South El Monte, CA 91733 626.444.0541 Fax 626.444.3887 www.Afcon.org

142

TRUSS BRACKET



Assembly Shown Using #555


Part #	Dim. A Offset	#142 Offset	Total Offset
535	1/4	2 1/4	2 1/2
551	3/4	2 1/4	3
552 or 553	1 1/16	2 1/4	3 3/16
555 or 556	1 1/8	2 1/4	3 3/8
680	1/4	2 1/4	2 1/2

SIZE - 1/2" rod.

MATERIAL - Carbon steel.

FINISH - Plain, E.G., and H.D.G.

LISTINGS -

 **203-EX 2551**

PATENT - No. 6,898,905

FUNCTION - For use on top chord of steel web joist structural members constructed with angle iron members from 3/16" thru 3/8" thick and 7" wide max. Use in combination with **AFCON** #535 thru #680 as desired. Can also be used on H or I beam, consult factory.

INSTALLATION - Install across the top of joist as shown. Locate 1/2" formed bolt on top chord, insert bracket over threaded bolt end, next insert hanger assembly followed by 1/2" nut and tighten. Install within 6" of panel point.

* Adjustable to fit "B" dimension of 5" thru 7"- if different Consult Factory.

FEATURES

- * Offsets hanger rod to facilitate clearance.
- * To space parallel piping away from web elements.
- * Possible alternative to a trapeze.
- * 8" Hanger load rating

ORDERING - Part #, finish.

