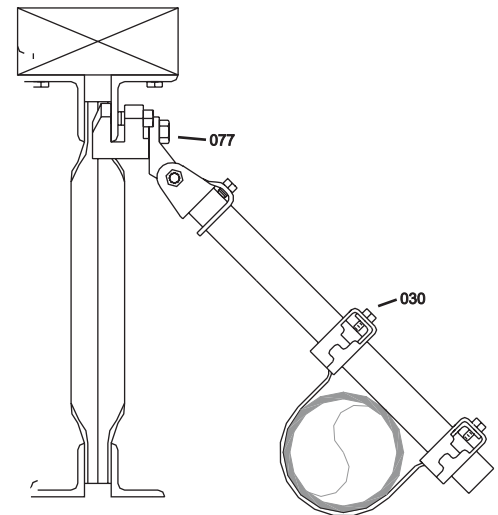
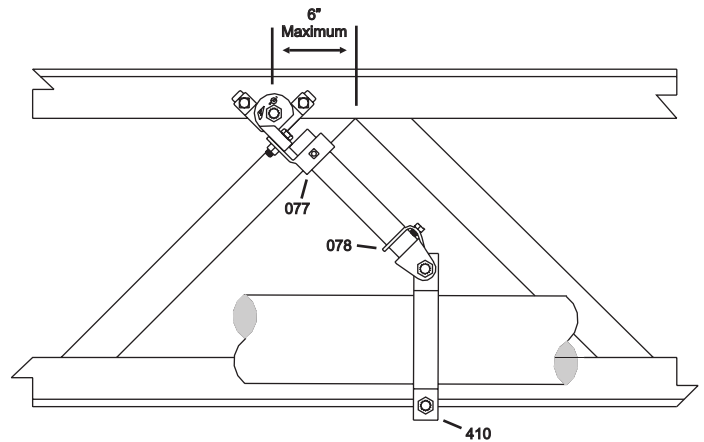
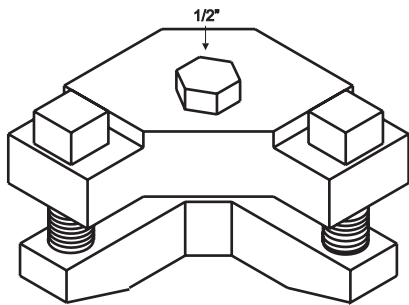






P.O. Box 3365 South El Monte, CA 91733 626.444.0541 Fax 626.444.3887 www.Afcon.org

087

SWAY BRACE ADAPTER



SIZE - 1/2" bolt.
MATERIAL - Carbon Steel or Ductile (Pictured).
FINISH - Plain and E.G.
PATENT - No. 6,629,678.
LISTING/APPROVAL -

 **203A-EX 2625, 203-EX 2551**
Listed only for use with other AFCON bracing products.
 **FM Approved.**
OSHPD OPA-0601-07 See Website.

FUNCTION - Sway brace adapter used to attach an *AFCON* sway brace assembly to a steel structural member. Listed as an 6" hanger attachment.

INSTALLATION - Per NFPA 13. **Load rating** - see chart.

The structural members design may dictate specific attachment criteria regarding vertical or horizontal mounting.

ASSEMBLY - Install set bolts finger tight, then additionally tighten 1/2 turn or torque to 125 inch pounds. Attach *AFCON* sway brace assembly with 1/2" bolt.

FEATURES

* Angular design matches the geometry of a steel web joist panel point.

* Fits 1/2" max. flange thickness.

ORDERING - Part # and finish.

Horizontal Load Ratings	UL	FM
Parallel 30° thru 90°	2765	3250
Perpendicular 30° thru 90°	2765	4500

Specific *AFCON* products are exclusively designed to be compatible **ONLY** with other *AFCON* products including parts and fasteners, resulting in a listed sway brace, restrainer or hanger assembly. **Be advised** the following warranty restriction will apply. **DISCLAIMER** - *AFCON* will **NOT** warrant against the failure of its products when used in combination with other products, parts or systems not manufactured or sold by *AFCON*. *AFCON* shall **NOT** be liable under any circumstances whatsoever for any direct or indirect, incidental or consequential damages of any kind, including but not limited to loss of business or profit, when non-*AFCON* products have been, or are used.

